



Yakult

Profile & History

2007–2008

PROFILE



Yakult Honsha: A Company Profile

- Corporate name: YAKULT HONSHA CO., LTD.
- Date founded: 1935
- Date incorporated: April 9, 1955
- Head office: 1-19 Higashi Shimbashi 1-chome, Minato-ku, Tokyo, Japan
Telephone: 03-3574-8960
- Paid-in capital: ¥31,117.65 million
- Annual account settlement date: March 31
- No. of employees: 2,852
including 389 employees temporarily assigned to other companies and contract employees (334 employees temporarily assigned and 55 contract employees) (as of March 31, 2007)
- Main banks: Mizuho Bank, Resona Bank, Bank of Tokyo-Mitsubishi UFJ

Principal Business Activities

Yakult Honsha: Manufacturing and marketing of food and beverage products, cosmetics, pharmaceuticals, and others
 Marketing companies: Distribution of Yakult's products
 Bottling companies: Bottling, commercialization, and container production

Principal Subsidiaries

Yakult Kyudan Co., Ltd. Yakult Food Industry Co., Ltd. Yakult Nishi Nihon Logistics Co., Ltd.
 Yakult Corporation Co., Ltd. Yakult Higashi Nihon Logistics Co., Ltd. Yakult Pharmaceutical Industry Co., Ltd.
 Yakult Materials Co., Ltd. Yakult Chuo Logistics Co., Ltd. Nihon Chlorella Co., Ltd.

Business Performance

	March 2003	March 2004	March 2005	March 2006	March 2007
Consolidated/Net Sales and Income					
Net Sales	242,740	238,847	247,506	267,707	273,099
Net Income	14,383	15,083*1	14,104*2	14,442	14,805

	March 2003	March 2004	March 2005	March 2006	March 2007
Non-Consolidated/Net Sales and Income					
Net Sales	160,826	157,466	156,525	162,423	161,656
Net Income	7,568	8,997*1	8,643	7,401	8,250

	March 2003	March 2004	March 2005	March 2006	March 2007
Non-Consolidated/Sales by Product					
Dairy products	77,218	79,307	78,011	77,765	75,839
Juices and soft drinks	47,387	43,779	46,069	44,273	44,490
Cosmetics	6,655	6,752	6,732	6,546	6,644
Pharmaceuticals	21,045	18,181	17,796	24,245	25,698
Others	8,519	9,446	7,916	9,592	8,982
Total	160,826	157,466	156,525	162,423	161,656

*1 Gain on the return of the managed portion of pension benefits to the government. (Unit: million yen)
 *2 Extraordinary gains of 3,653 million yen were recorded in fiscal 2005 for reversal of retirement benefit past employment-service liabilities.

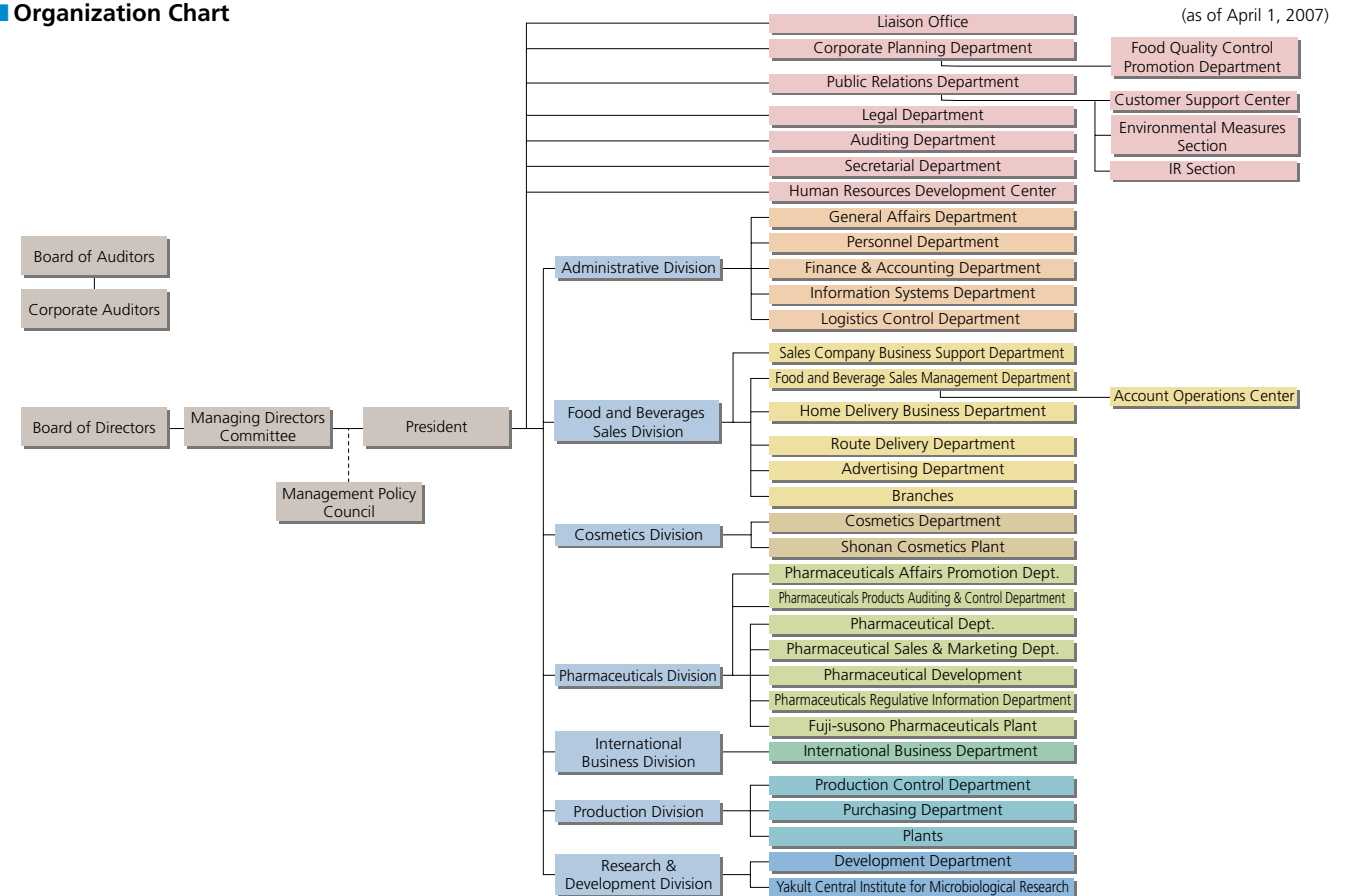
Branches

Hokkaido Branch: Odori Koen Bldg. 6F, 6-10-10, Odori Nishi, Chuo-ku, Sapporo-shi, Hokkaido 060-0042 TEL: 011-231-8960
 Tohoku Branch: Daiwa Securities Sendai Bldg. 10F, 2-8-13, Chuo, Aoba-ku, Sendai-shi, Miyagi 980-0021 TEL: 022-713-8960
 Kanto Branch: Shimbashi MCV Bldg. 6F, 5-13-5, Shimbashi, Minato-ku, Tokyo 105-0004 TEL: 03-5470-7561
 Tokyo Branch: 2-39-8, Hatagaya, Shibuya-ku, Tokyo 151-0072 TEL: 03-3373-8960
 Chubu Kanagawa Branch: 2-5-10, Kugenumashinmei, Fujisawa-shi, Kanagawa 251-0021 TEL: 0466-28-8960
 Tokai Branch: MANHYO Dai-ichi Bldg. 5F, 2-12-14, Nishiki, Naka-ku, Nagoya-shi, Aichi 460-0003 TEL: 052-201-8960
 Kinki Branch: Uemura Nissei Bldg. 7F, 3-3-31, Miyahara, Yodogawa-ku, Osaka-shi, Osaka 532-0003 TEL: 06-6392-8960
 Chu-shikoku Branch: Okayama Symphony Bldg. 9F, 1-5-1, Omote-cho, Okayama-shi, Okayama 700-0822 TEL: 086-226-8960
 Kyushu Branch: Denki Bldg. Honkan 2F, 2-1-82, Watanabe-dori, Chuo-ku, Fukuoka-shi, Fukuoka 810-0004 TEL: 092-711-8960

Research and Development Institute

Yakult Central Institute for Microbiological Research: 1796, Yaho, Kunitachi-shi, Tokyo 186-8650 TEL: 042-577-8960

Organization Chart



Board of Directors & Auditors

President			Managing Directors			Directors (Part-time)		
Sumiya Hori			Katsumi Ohtsubo			Sven Thormahlen (Outside)		
Senior Managing Directors			Yoshihiro Kawabata			Marcel Bertaud (Outside)		
Akira Katsumata (Divisional General Manager, Cosmetics Division)			Tsuyoshi Kinugasa			Shouji Ikegami		
Naomasa Tsuritani (Divisional General Manager, Administrative Division and International Business Division)			Directors			Masayuki Takemura		
Ryuichiro Tanaka (Divisional General Manager, R&D Division and Director of the Yakult Central Institute for Microbiological Research)			Chizuka Kai			Toshihiro Araki		
Tamotsu Tomibe (Divisional General Manager, Food & Beverages Sales Division)			Takashige Negishi			Tetsuya Hoshino		
Ryuji Chino (Divisional General Manager, Production Division)			Yasufumi Murata			Yasuhisa Abe		
Managing Directors			Masahiro Negishi			Senior Corporate Auditor		
Kiyoshi Terada (Divisional General Manager, Pharmaceuticals Division)			Shigeyoshi Sakamoto			Yasukuni Miura		
			Hiroshi Narita			Corporate Auditors		
			Haruji Sawada			Teruo Nakamura		
			Directors (Part-time)			Akihiko Okudaira (Outside)		
			Jacques Vincent (Outside)			Ryohei Sumiya (Outside)		
			Emmanuel Faber (Outside)			Masahiko Ikeda (Outside)		
						Seijuro Tanigawa (Outside)		

Honsha Plants

Fukushima Plant: 10-1, Aza Tooki, Kuroiwa, Fukushima-shi, Fukushima 960-8520 TEL: 024-546-8960
 Ibaraki Plant: 1232-2, Oaza Kawatsuma, Goka-machi, Sashima-gun, Ibaraki 306-0314 TEL: 0280-84-2121
 Shonan Cosmetics Plant: 2-5-10, Kugenumashinmei, Fujisawa-shi, Kanagawa 251-0021 TEL: 0466-25-8960
 Fuji Susono Plant: 653-1, Aza Juzaburo, Shimowada, Susono-shi, Shizuoka 410-1105 TEL: 055-997-3311
 Fuji-susono Pharmaceuticals Plant: 653-1, Aza Juzaburo, Shimowada, Susono-shi, Shizuoka 410-1105 TEL: 055-997-4417
 Shizuoka Plant: 2-6-7, Kuniyoshida, Suruga-ku, Shizuoka-shi, Shizuoka 422-8004 TEL: 054-262-8960
 Kyoto Plant: 38, Tohachi, Makishima-cho, Uji-shi, Kyoto 611-0041 TEL: 0774-22-8960
 Fukuyama Plant: 5253, Kamura-cho, Fukuyama-shi, Hiroshima 729-0112 TEL: 084-934-8960
 Saga Plant: 2300, Tamichigari, Kanzaki-machi, Kanzaki-shi, Saga 842-0002 TEL: 0952-52-3161
 Kumamoto Plant: 3-24-1, Kamikumamoto, Kumamoto-shi, Kumamoto 860-0079 TEL: 096-324-8960

- 1930s**
 - 1930 ● Dr. Minoru Shirota succeeds in culturing and utilizing lactic acid bacteria, useful for maintaining health (*Lactobacillus casei* strain Shirota).
 - 1935 ● *Yakult* is manufactured and introduced to the market.
 - 1938 ● *Yakult* is registered as a trademark.
- 1940s**
 - 1940 ● Local offices of the Association for Promotion of Preventive Bacteria Strain Shirota are established in various parts of Japan for the purpose of marketing and distributing *Yakult*.
- 1950s**
 - 1955 ● Yakult Honsha Co., Ltd. is established. (Nishi Hatchobori, Chuo-ku, Tokyo)
 - Research Institute is established in Kyoto.
- 1960s**
 - 1963 ● Yakult launches its unique Yakult Ladies system of door-to-door distribution.
 - 1964 ● Yakult Co., Ltd. (Taiwan) begins operations as the company's first overseas operation base.
 - 1967 ● Yakult Central Institute for Microbiology Research is established in Kunitachi, Tokyo.
 - 1968 ● The company takes over the management of the Sankei Atoms baseball team (now the Yakult Swallows).
 - Yakult S/A Ind. E. Com. (Brazil) begins operations.
 - *Yakult* is introduced to the market in a new plastic container.
 - 1969 ● Hong Kong Yakult Co., Ltd. begins operations.
- 1970s**
 - 1970 ● *Joie* fermented milk is introduced to the market.
 - 1971 ● The company begins the full-scale sale of cosmetics.
 - Yakult (Thailand) Co., Ltd. and Korea Yakult Co., Ltd. begin operations.
 - 1972 ● New head office building is completed in Higashi Shimbashi, Minato-ku, Tokyo.
 - Program of regular visits to senior citizens by Yakult Ladies begins.
 - 1975 ● *Biolactis Capsules* ethical drug is introduced to the healthcare industry, thereby marking Yakult's entrance into the pharmaceutical business.
 - *Sofuhl* fermented milk is introduced to the market.
 - 1978 ● Yakult Philippines, Inc. is established.
 - *Mil-Mil* fermented milk — developed through the direct culture of bifidobacteria — is introduced to the market.
 - 1979 ● Yakult (Singapore) Pte. Ltd. begins operations.
 - The company verifies the anticancer effect of lactobacillus YIT 9018 and begins the development of a lactobacilli-based anticancer drug.
 - *Yakult Seichoyaku* intestinal regulator — an over-the-counter medicine — is introduced to the healthcare industry.
- 1980s**
 - 1980 ● Company stocks are listed on the Second Section of the Tokyo Stock Exchange.
 - *Toughman* health drink is introduced to the market.
 - 1981 ● Company stocks are listed on the First Section of the Tokyo Stock Exchange.
 - Yakult S.A. De C.V. (Mexico) begins operations.

- 1981 ● *Yakult 80* fermented milk drink is introduced to the market.
- 1982 ● *Mil-Mil E* fermented milk is introduced to the market.
- 1986 ● Fuji Susono Plant is completed for dairy-product manufacturing.
- 1987 ● Facilities for the manufacture of pharmaceuticals and beverages are completed at the Fuji Susono Plant.
- 1988 ● *Calorian* enriched nutritional liquid food product is introduced to the market.
- 1989 ● *Revecy S.E.* series is introduced to the market.
- *Bifiel*, fermented milk containing *bifidobacteria*, is introduced to the market.
- 1990s**
 - 1990 ● The company files an application with the Ministry of Health and Welfare for the approval to manufacture LC9018 immunotherapeutic anticancer agent (product name, *Lemonal Injection*).
 - 1991 ● P.T. Yakult Indonesia Persada begins operations.
 - Representative office is opened in Amsterdam, Netherlands.
 - *Yakult 80 Ace* fermented milk drink is introduced to the market.
 - 1992 ● Bioscience Research Foundation is established.
 - 1994 ● Yakult Australia Pty. Ltd. and Yakult Nederland B.V. begin operations.
 - The manufacture of the CPT-11 chemotherapeutic anticancer drug is approved, and the drug is introduced to the healthcare industry under the brand name *Campto Injection*.
 - The company receives the Minister for Health and Welfare Award for distinguished volunteer service on behalf of the program of regular visits to senior citizens.
 - 1995 ● Yakult Belgium S.A./N.V. begins operations.
 - The sale of the CPT-11 chemotherapeutic anticancer drug is approved in France as a therapeutic drug for progressive recurrent intractable colorectal cancer.
 - *Parabio Series* premium-quality skincare product line is introduced to the market.
 - *Yakult BL Seichoyaku* intestinal regulator — which combines bifidobacteria and lactobacilli — is introduced to the market.
 - 1996 ● Yakult Europe B.V. is established.
 - Yakult UK Ltd. and Yakult Deutschland GmbH begin operations.
 - Yakult Distribution Center is completed. (currently 6 distribution centers)
 - The sale of the CPT-11 chemotherapeutic anticancer drug is approved in the U.S. as a therapeutic drug for progressive recurrent intractable colorectal cancer.
 - 1997 ● Fuji Susono Plant receives ISO9002 certification.
 - *The ISO9002 standard, as a result of ISO standard revisions, was integrated into the ISO9001 standard as of October 2002.)
 - Yakult Argentina S.A. begins operations.
 - The company receives the Minister for Agriculture, Forestry, and Fisheries Award (in the Consumer Division) at the Excellent Corporations of Food Industry Awards.
 - *Revecy-N Series* skincare product line is introduced to the market.
 - 1998 ● Ten Yakult plants and one subsidiary plant receive HACCP (Hazard Analysis Critical Control Point) approval for total hygienic control in their production processes.
 - *All the food plants (ten Yakult plants and nine subsidiary plants) had obtained approval as of October 2001.
 - *Yakult* is approved by the Ministry of Health and Welfare for labeling as Foods for Specified Health Uses.

- 1998 ● *Yakult-LT* fermented milk drink is introduced to the market.
- *Bansoreicha* is introduced to the market.
- *Spherox* arterial embolization material is introduced to the healthcare industry.
- *Yakult 80 Ace*, *Yakult LT*, *Joie*, *Mil-Mil*, and *Mil-Mil E* are approved by the Ministry of Health and Welfare for labeling as Foods for Specified Health Uses.
- 1999 ● *Yakult 400* fermented milk drink is introduced to the market.
- *Bifiel*, *Yakult 400*, and *Sofuhl* are approved by the Ministry of Health and Welfare for labeling as Foods for Specified Health Uses.
- The cancer prevention efficacy of *Lactobacillus casei* strain Shirota is announced at the 58th General Meeting of the Japan Cancer Society.
- Kyoto plant receives ISO14001 certification.
- *Twelve Yakult plants, the Chemical and Microbiological Analysis Center, Nihon Chlorella, nine subsidiary plants, and one distribution company have obtained certification as of June 30, 2006.
- 2000s**
 - 2000 ● *Bansoreicha* is approved by the Ministry of Health and Welfare for labeling as Foods for Specified Health Uses.
 - *Femiest* menopausal treatment product is introduced to the healthcare industry.
 - The company receives an award from the *Nihon Shokuryo Shimbun* (Japan Food Stuff Newspaper) for contributions to the development of the food industry during the 20th century.
 - 2001 ● *Yakult 80 Ace LT* fermented milk drink is introduced to the market.
 - Fuji-susono Pharmaceuticals Plant expansion completed.
 - *Lemorea* relaxation drink is introduced to the market.
 - *Purela* soft yogurt is introduced to the market.
 - *Becycle Lifting Essence*, a new beauty liquid, is introduced to the market.
 - 21st century Food and Health Forum is held. (subsequently held annually)
 - Yakult Swallows win their sixth league championship and fifth Japan Series title.
 - 2002 ● World's first Automatic Intestinal Flora Analysis System is developed.
 - Guangzhou Yakult Co., Ltd. begins operations.
 - 2003 ● *Kurozu Drink* is introduced to the market.
 - Cosmetic brand *Posh Mama* is introduced to the market.
 - *Campto Injection* wins the Chairman's Prize from Japan Institute of Invention and Innovation.
 - *Aloe tablets MY* over-the-counter drug is introduced to the healthcare industry.
 - Vending machine sales alliance is established with Kirin Beverage.
 - 2004 ● Yakult (Malaysia) Sdn. Bhd. begins operations.
 - *New Toughman* and *Toughman V* are introduced to the market.
 - Entered into a strategic alliance with Groupe Danone.
 - Sales of *Yakult* are begun in New Zealand.
 - The *Revecy Series*, a new foundation cosmetic line, is introduced to the market.
 - *Pretio* (Food for Specified Health Uses), a fermented milk drink containing GABA, which lowers blood pressure, is introduced to the market.
 - Shanghai Yakult Co., Ltd. begins operations.
 - Sales of *Yakult* are begun in Ireland.
 - 2005 ● *Yakult 300V* is introduced to the market.
 - Research center is established in Europe (Belgium).

- 2005 ● Changed the trading unit for Yakult Honsha shares from 1,000 shares to 100 shares.
- Established the Probiotics Research (Yakult) Chair at the Juntendo University Graduate School of Medicine.
- *Fucoidan* health tea drink is introduced to the market.
- Yakult (China) Co., Ltd. is established to oversee operations in China.
- Oxaliplatin, a drug for treating malignant tumors, is approved for import and introduced to the market under the name *Eiplat*.
- Signed a memorandum of understanding with Kirin Brewery Co., Ltd. and Kirin Beverage Corporation to enter into a business partnership focusing on health and functional foods.
- Co-sponsored the FINA World Swimming Championships as an Official FINA Partner.
- Decision made to enter the Indian market in alliance with Groupe Danone.
- The winter uniform for Yakult Ladies is redesigned.
- Three types of *Bifiene*, the new yogurt drink, are introduced to the market.
- Beijing Yakult Co., Ltd. begins operations.
- Yakult Osterreich GmbH begins operations.
- 2006 ● *Sofuhl LCS 100* is introduced to the market.
- The name of Yakult's line of beauty products was changed to Yakult Beautiens.
- Our new line of basic cosmetics, *Uruou Series*, is introduced to the market.
- The process of acquiring ISO9001 and ISO14001 certification of marketing companies begins (integrated certification).
- *Thorpedo* is introduced to the market, in collaboration with Ian Thorpe.
- Decision made to enter the Vietnamese market in alliance with Groupe Danone.
- *Yakult BL Seichoyaku S Tablets*, containing *L. casei* strain Shirota and *B. breve* strain Yakult, are introduced to the market.
- *Benizu Drink* is introduced to the market.
- Yakult acquires day care & education firm Petit Co., Ltd.
- Shanghai Yakult Marketing Co., Ltd. begins operations.
- *Yakult 300VLT* is introduced to the market.
- *Yakult Science Research Lab* pavilion opened at KidZania Tokyo.
- Kirin Yakult NextStage Co., Ltd. is established.
- *Pretio Triple Pack* introduced to the market, including in-store sales channels.
- The Yakult Crime and Disaster Prevention Council is established and a memorandum of understanding is concluded with the Tokyo Metropolitan Police Department regarding crime-prevention.
- 2007 ● Yakult Italy begins operations.
- *Bifiene* is introduced on the European market.
- *Bifia*, fermented dairy beverage containing bifidobacteria, is introduced to the market.
- Yakult's *Bifiene M* and *Bifiene S* are approved for labeling as Foods for Specified Health Uses.
- Local representative office of Yakult established in the United Arab Emirates (UAE).
- *Yakult Seinyu Tappuri Yogurt* (raw milk yogurt) (80g) is introduced to the market.

● Corporate History
● History of Products

PRODUCTS

Foods and Beverages These drinks and dairy products were born of the concept of preventive medicine. All of these products are highly functional and developed with aim of improving health.

- Fermented milk drinks ● Fermented milk



- Juices ● Soft drinks ● Coffee
- Tea ● Soybean milk drink ● Other beverages



Cosmetics Yakult's cosmetics are the product of lactobacilli research. Our skincare products enhance the skin's natural beauty, vitality, and resilience.

- Skincare products ● Makeup products
- Hair-care products ● Toiletries



Pharmaceuticals Yakult's pharmaceuticals bring significant contributions to the science of curative medicine. Our products play an active part in promoting health, at home and in leading medical facilities.

- Pharmaceuticals
- Ethical drugs (anticancer drugs, lactic acid bacteria preparations, etc.)
- Nonprescription drugs (lactic acid bacteria preparations)
- Medical instruments
- Food products for use in hospitals
- Biochemical products
- Various enzymes (used as reagents in food processing and in industry)



NETWORK

Domestic Operations	
Head Office	1
Branches	9
Research and Development institute	1
Honsha plants	10
Marketing companies	133
Bottling companies	6
Yakult Ladies	approx. 44,000
Yakult Beauty Advisors	approx. 8,100

(as of August 31, 2007)

Kyushu Block	
Yakult Ladies	5,700
Yakult Beauty Advisors	760
Honsha Organization Kyushu Branch Saga Plant ●● Kumamoto Plant ●●	
Marketing companies (18) Yakult Kitakyushu Sales Co., Ltd. Yakult Tochiku Sales Co., Ltd. Yakult Fukuoka Sales Co., Ltd. Yakult Minami Fukuoka Sales Co., Ltd. Yakult Kurume Sales Co., Ltd. Yakult Oita Sales Co., Ltd. Yakult Saga Sales Co., Ltd. Yakult Nagasaki Co., Ltd. Yakult Sasebo Co., Ltd. Yakult Goto Sales Co., Ltd. Yakult Iki Tsushima Sales Co., Ltd. Yakult Kumamoto Co., Ltd. Yakult Miyazaki Sales Co., Ltd. ●● Yakult Miyakonojo Sales Co., Ltd. ●● Yakult Sendai Sales Co., Ltd. ●● Yakult Kagoshima Sales Co., Ltd. ●● Yakult Kagoshima Tobu Sales Co., Ltd. ●● Yakult Okinawa Co., Ltd.	
Bottling companies (1) Yakult Fukuoka Plant Co., Ltd. ●●	

Chu-shikoku Block	
Yakult Ladies	4,900
Yakult Beauty Advisors	1,850
Honsha Organization Chu-shikoku Branch Fukuyama Plant ●●	
Marketing companies (18) Yakult Tottori Sales Co., Ltd. Yakult Sanin Chuo Sales Co., Ltd. Yakult Shimane Sales Co., Ltd. Yakult Okayama Sales Co., Ltd. Yakult Tsuyama Sales Co., Ltd. Yakult Okayama Seibu Sales Co., Ltd. Yakult Aki Sales Co., Ltd. ●● Yakult Hiroshima Chuo Sales Co., Ltd. ●● Yakult Hiroshima Hokubu Sales Co., Ltd. ●● Yakult Yamaguchi Tobu Sales Co., Ltd. Yakult Yamaguchi Sales Co., Ltd. Yakult Kagawa Tobu Sales Co., Ltd. Yakult Kagawa Seibu Sales Co., Ltd. Yakult Tokushima Sales Co., Ltd. Yakult Kochi Sales Co., Ltd. Yakult Matsuyama Sales Co., Ltd. Yakult Ehime Tobu Sales Co., Ltd. Yakult Ehime Nanbu Sales Co., Ltd.	

Kinki Block	
Yakult Ladies	5,700
Yakult Beauty Advisors	920
Honsha Organization Kinki Branch Kyoto Plant ●●	
Marketing companies (15) Yakult Keiji Sales Co., Ltd. Yakult Kyoraku Sales Co., Ltd. Yakult Osaka Sales Co., Ltd. Yakult Suita Sales Co., Ltd. Yakult Sennari Sales Co., Ltd. Yakult Sakai Sales Co., Ltd. Yakult Osaka Tobu Sales Co., Ltd. Yakult Minami Osaka Sales Co., Ltd. Yakult Nara Sales Co., Ltd. Yakult Wakayama Sales Co., Ltd. Yakult Hanshin Sales Co., Ltd. Yakult Kobe Sales Co., Ltd. Yakult Hyogo Sales Co., Ltd. Yakult Himeji Sales Co., Ltd. Yakult Awaji Sales Co., Ltd.	
Bottling companies (2) Yakult Osaka Plant Co., Ltd. ●● Yakult Kobe Plant Co., Ltd. ●●	

Tokai Block	
Yakult Ladies	4,900
Yakult Beauty Advisors	770
Honsha Organization Tokai Branch	
Marketing companies (14) Yakult Gifu Sales Co., Ltd. Yakult Takayama Sales Co., Ltd. Yakult Higashi Aichi Sales Co., Ltd. Yakult Nagoya Sales Co., Ltd. Yakult Beverage Service Tokai Co., Ltd. Yakult Owari Sales Co., Ltd. Yakult Higashi Mikawa Sales Co., Ltd. Yakult Nishi Mikawa Sales Co., Ltd. Yakult Mie Sales Co., Ltd. Yakult Ise Sales Co., Ltd. Yakult Toyama Sales Co., Ltd. Yakult Ishikawa Sales Co., Ltd. Yakult Nanao Sales Co., Ltd. Yakult Fukui Sales Co., Ltd.	
Bottling company (1) Yakult Aichi Plant Co., Ltd. ●●	

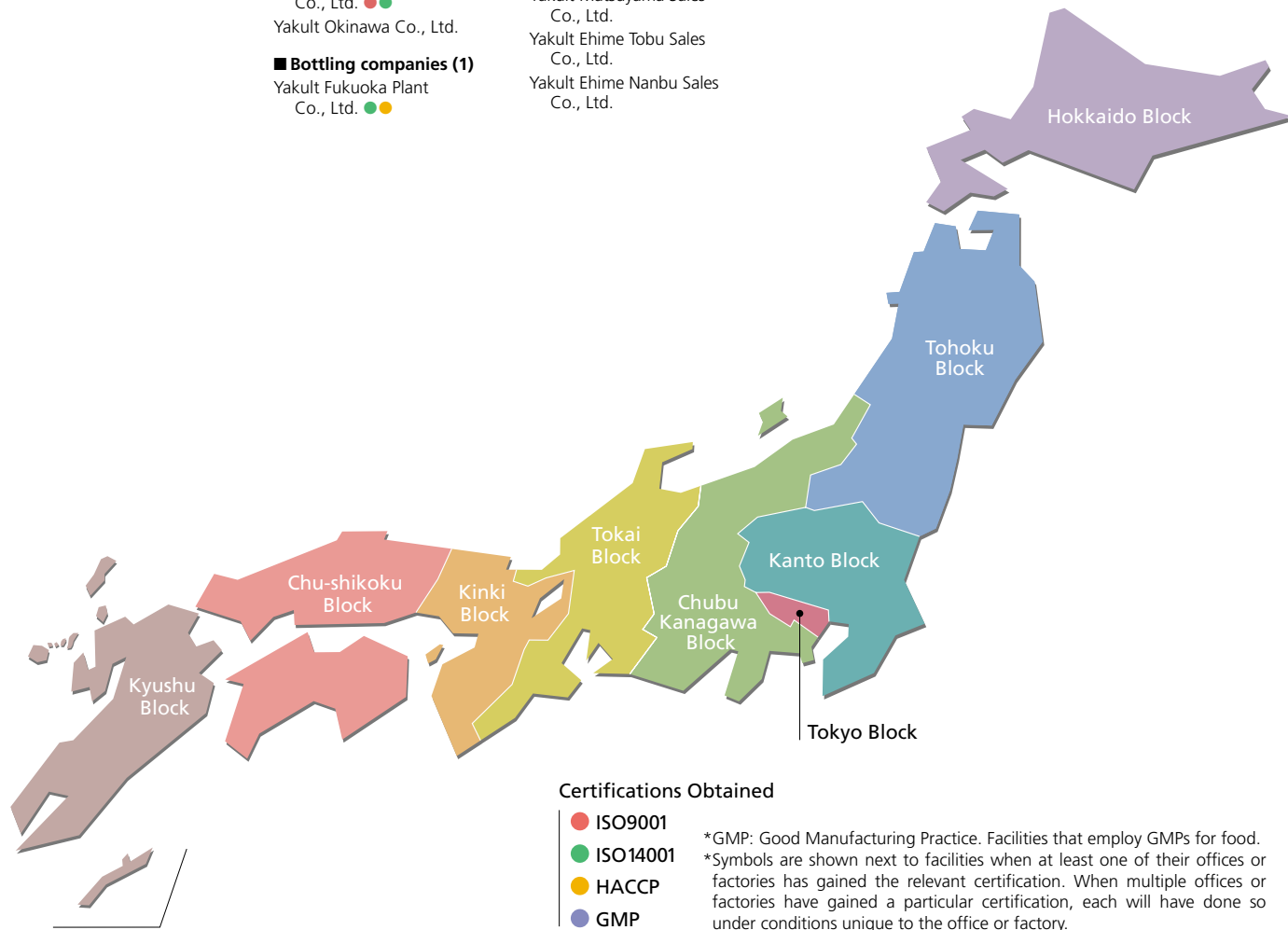
Chubu Kanagawa Block	
Yakult Ladies	5,800
Yakult Beauty Advisors	870
Honsha Organization Chubu Kanagawa Branch Shonan Cosmetics Plant ● Fuji Susono Plant ●● Fuji-susono Pharmaceutical ● Shizuoka Plant ●●	
Marketing companies (18) Yakult Yokohama Chuo Sales Co., Ltd. Yakult Kita Keihin Sales Co., Ltd. Yakult Sagami Sales Co., Ltd. Yakult Kawasaki Sales Co., Ltd. Yakult Shonan Sales Co., Ltd. Yakult Odawara Sales Co., Ltd. Yakult Atsugi Sales Co., Ltd. Yakult Sobu Sales Co., Ltd. Yakult Higashi Shizuoka Sales Co., Ltd. Yakult Chuo Shizuoka Sales Co., Ltd. Yakult Nishi Shizuoka Sales Co., Ltd. Yakult Yamanashi Sales Co., Ltd. Yakult Nanshin Sales Co., Ltd. Yakult Hokushin Sales Co., Ltd. Yakult Niigata Sales Co., Ltd. Yakult Nagaoka Sales Co., Ltd. Yakult Shibata Sales Co., Ltd. Yakult Joetsu Sales Co., Ltd. ●●	

Tokyo Block	
Yakult Ladies	3,200
Yakult Beauty Advisors	190
Honsha Organization Head Office Tokyo Branch Yakult Central Institute for Microbiological Research ●	
Marketing companies (9) Yakult Sumida Sales Co., Ltd. Yakult Johoku Sales Co., Ltd. Yakult Katsushika Sales Co., Ltd. Yakult Toto Sales Co., Ltd. Yakult Seito Sales Co., Ltd. Yakult Tama Sales Co., Ltd. Yakult Musashino Sales Co., Ltd. Yakult Chuo Tokyo Sales Co., Ltd. Yakult Keihoku Sales Co., Ltd.	

Kanto Block	
Yakult Ladies	6,600
Yakult Beauty Advisors	840
Honsha Organization Kanto Branch Ibaraki Plant ●●	
Marketing companies (12) Yakult Saitama Sales Co., Ltd. Yakult Saitama Tobu Sales Co., Ltd. Yakult Kazo Sales Co., Ltd. Yakult Saitama Nishi Sales Co., Ltd. ● Yakult Saitama Hokubu Sales Co., Ltd. Yakult Chiba Chuo Sales Co., Ltd. Yakult Boso Sales Co., Ltd. Yakult Mito Sales Co., Ltd. Yakult Koga Sales Co., Ltd. Yakult Utsunomiya Sales Co., Ltd. Yakult Ryomo Sales Co., Ltd. Yakult Gunma Sales Co., Ltd. ●●	
Bottling company (1) Yakult Chiba Plant Co., Ltd. ●●	

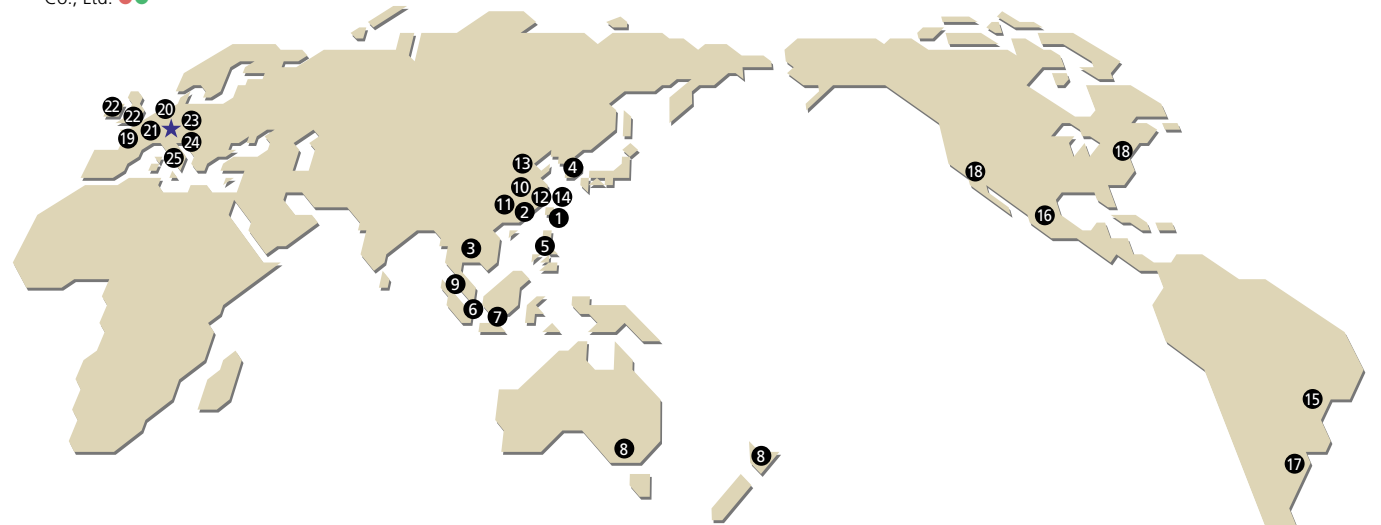
Tohoku Block	
Yakult Ladies	4,400
Yakult Beauty Advisors	340
Honsha Organization Tohoku Branch Fukushima Plant ●●	
Marketing companies (16) Yakult Aomori Sales Co., Ltd. Yakult Iwate Sales Co., Ltd. Yakult Miyako Sales Co., Ltd. Yakult Ofunato Sales Ltd. Yakult Akita Sales Co., Ltd. Yakult Odate Sales Co., Ltd. Yakult Yokote Sales Co., Ltd. Yakult Yamagata Sales Co., Ltd. Yakult Yonezawa Sales Co., Ltd. ● Yakult Shonai Sales Co., Ltd. Yakult Miyagi Chuo Sales Co., Ltd. Yakult Ishinomaki Sales Co., Ltd. Yakult Fukushima Sales Co., Ltd. Yakult Koriyama Sales Co., Ltd. Yakult Aizu Sales Co., Ltd. Yakult Iwaki Sales Co., Ltd.	
Bottling company (1) Yakult Iwate Plant Co., Ltd. ●●	

Hokkaido Block	
Yakult Ladies	2,800
Yakult Beauty Advisors	1,560
Honsha Organization Hokkaido Branch	
Marketing companies (13) Yakult Sapporo Sales Co., Ltd. Yakult Otaru Sales Co., Ltd. Yakult Muroran Sales Co., Ltd. Yakult Tomakomai Sales Co., Ltd. Yakult Iwamizawa Sales Co., Ltd. Yakult Hakodate Sales Co., Ltd. Yakult Kushiro Sales Co., Ltd. Yakult Obihiro Sales Co., Ltd. Yakult Kitami Sales Co., Ltd. Yakult Kita Hokkaido Sales Co., Ltd. Yakult Rumoi Sales Co., Ltd. Yakult Wakkanai Sales Co., Ltd. Yakult Monbetsu Sales Co., Ltd.	



Promoting Better Health through Domestic and International Networks

The Yakult Group comprises nearly 170 companies (approximately 190 counting overseas operations), including Yakult Honsha Co., Ltd., marketing companies that distribute Yakult's products to customers throughout Japan, bottling companies that manufacture containers and bottle Yakult's products, and other affiliates.



- 1 Yakult Co., Ltd. (Taiwan) ●
- 2 Hong Kong Yakult Co., Ltd. ●
- 3 Yakult (Thailand) Co., Ltd. ●●
- 4 Korea Yakult Co., Ltd. ●●
- 5 Yakult Philippines, Inc.
- 6 Yakult (Singapore) Pte. Ltd. ●●
- 7 P.T. Yakult Indonesia Persada ●●
- 8 Yakult Australia Pty. Ltd. ●
- 9 Yakult (Malaysia) Sdn. Bhd. ●
- 10 Yakult (China) Co., Ltd.
- 11 Guangzhou Yakult Co., Ltd. ●●●●
- 12 Shanghai Yakult Co., Ltd.
- 13 Beijing Yakult Co., Ltd.
- 14 Shanghai Yakult Marketing Co., Ltd.
- 15 Yakult S/A Ind. E. Com. (Brazil) ●●
- 16 Yakult S.A. De C.V. (Mexico) ●●
- 17 Yakult Argentina S.A.
- 18 Yakult U.S.A. Inc.
- 19 Yakult Europe B.V. ●●●●
- 20 Yakult Nederland B.V.
- 21 Yakult Belgium S.A./N.V.
- 22 Yakult UK Ltd. (Ireland Branch) ●●
- 23 Yakult Deutschland GmbH
- 24 Yakult Oesterreich GmbH
- 25 Yakult ITALIA S.r.l.
- ★ Yakult Honsha European Center for Microbiology ESV (YHER)

Overseas Operations	
Yakult Ladies	approx. 35,000
Employees	approx. 10,500

(as of December 31, 2006)

- Countries where products are also sold (excluding test sales in Luxembourg, France, Spain, Brunei, Uruguay, and Canada)
- Countries and regions where sales are slated to begin: India, Vietnam

Yakult