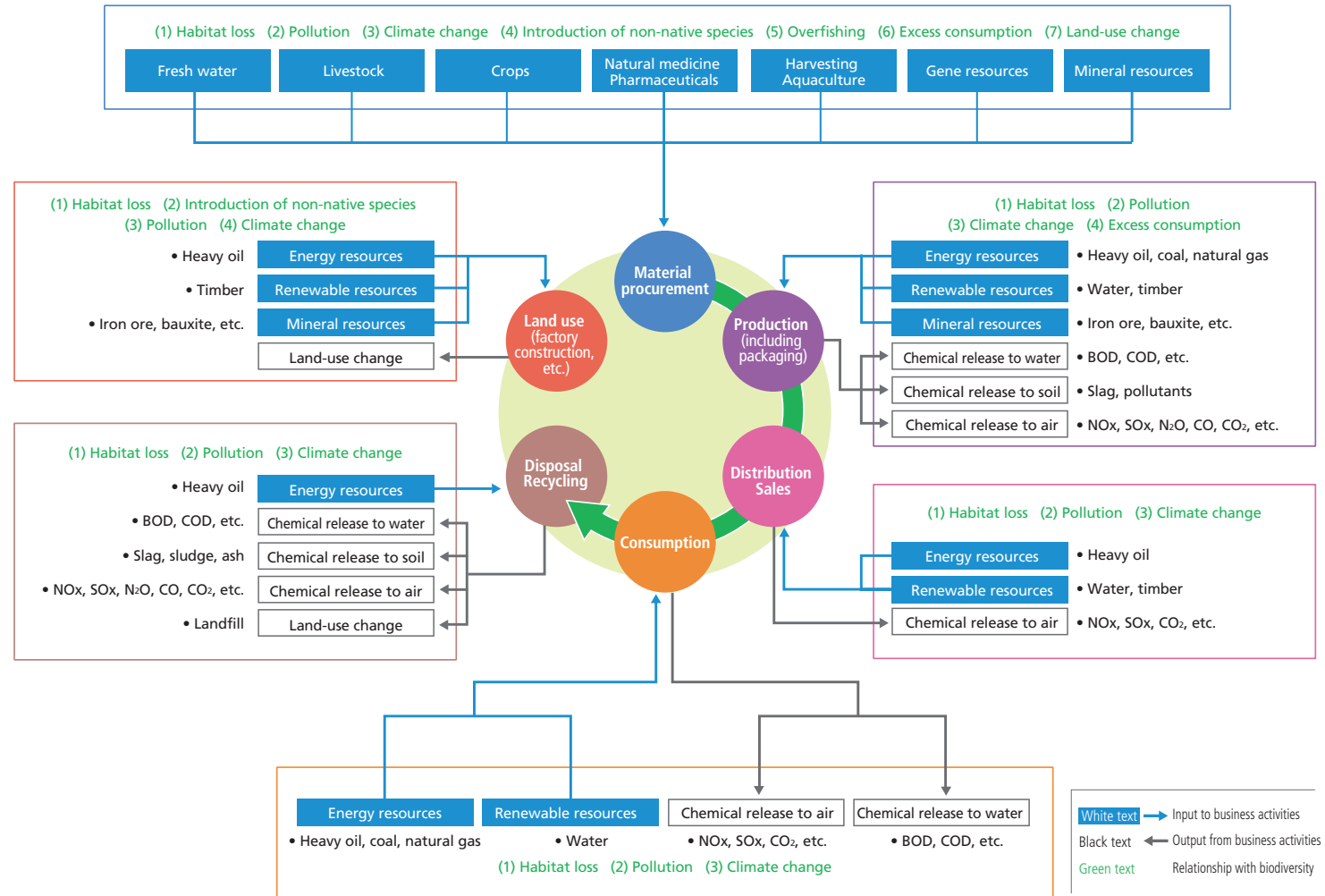


Biodiversity

Our business and biodiversity

Yakult clearly stipulates in one of the Action Directives in the Yakult Basic Policy on the Environment that “In all business activities, business units will give due consideration to the environment as well as biodiversity by promoting the reduction of environmental impacts.” We believe it is essential to give consideration to the global environment and biodiversity in our corporate activities that aim to benefit the health of our customers. We will strive to conserve biodiversity going forward by making good use of the technology we have built up in research and development over the years. At each step of our business activities, from material procurement to disposal and recycling, we review our dependency and our impact on the environment, and then clarify the relationship between business activities and biodiversity as shown on the right:

Map of relationship between business activities and biodiversity



Assessment of biodiversity risks for existing operations

In order to better understand the impact our existing operations have on biodiversity conservation, we conduct assessments of how each plant affects the natural ecosystems in the river basins where they are located. We use IBAT to determine the presence of nature conservation areas (world natural

heritage sites, International Union for Conservation of Nature (IUCN) Category I, II, III, IV and V areas, Ramsar Convention wetlands) and habitats of IUCN-designated endangered species within 10 km of each plant.

Assessment of biodiversity around production bases

Plant	River basin	Fiscal 2021 total water intake (m ³)	Fiscal 2021 total water discharge (m ³)	Assessment using IBAT		Notes on biodiversity (ecological risk)
				No. of aquatic species	No. of endangered species (IUCN-designated)	
Fukushima Plant	Entire Abukuma River basin including Surikami River	180,032	150,625	62	0*	Plant wastewater discharges into the Abukuma River, which has been designated as a Key Biodiversity Area (KBA) and Important Bird and Biodiversity Area (IBA) as a landing zone for northern pintail (a duck on the IUCN Red List).
Hyogo Miki Plant	Kako River basin, Muko River basin, Yodo River basin, around Kobe City	263,876	225,059	66	0	Within 10 km downstream of the plant, there are no areas of special importance for biodiversity, and no habitats of IUCN-designated endangered species have been identified in the small bodies of water around the plant.
Ibaraki Plant	Tone River system	152,416	125,077	60	0	Within 10 km downstream of the plant, there are no areas of special importance for biodiversity, and no habitats of IUCN-designated endangered species have been identified in the small bodies of water around the plant.
Fuji Susono Plant, Fuji Susono Pharmaceutical Plant	Kano River basin	463,605	244,593	63	0	Within 10 km downstream of the plant, there is a wildlife sanctuary classified as IUCN Category IV. No habitats of IUCN-designated endangered species have been found in the small bodies of water around the plant.
Saga Plant	Chikugo River system	175,697	130,433	61	0	Within 10 km downstream of the plant, there are no areas of special importance for biodiversity, and no habitats of IUCN-designated endangered species have been identified in the small bodies of water around the plant.
Yakult Iwate Plant	Kitakami River system	83,743	47,628	58	0	The area surrounding water sources have been designated as IUCN protected areas, including Category Ib: forest ecosystem conservation area at the source of Kakkonda and Tama Rivers, and Wagadake plant community and forest reserve, and Category II: Towada-Hachimantai National Park and Hayachine Quasi-National Park.
Yakult Chiba Plant	Tone River basin	103,461	28,172	63	1	Water source area has a number of conservation areas classified as IUCN Categories II and IV, such as Joshinetsu-Kogen. Within 10 km downstream of the plant, there is a Category IV protected area (wildlife sanctuary). It has also been identified as a habitat for the Reeves' turtle , classified as endangered by IUCN.
Yakult Aichi Plant	Kiso River, Yahagi River, Shonai River basins	80,079	30,138	66	1	The streams and rivers of the Nobi Plain are habitats for the Madara-naniwa-tombo dragonfly , classified as endangered (Ib by Japan's Ministry of the Environment Red List), and has been designated as a KBA.
Yakult Okayama Wake Plant	Yoshii River basin	110,657	73,425	65	2	There are a number of IUCN Category IV areas within the Yoshii River basin. There are also Category IV and V protected areas within 10 km downstream of the plant. These have been identified by IUCN as habitats for the endangered Reeves' turtle and the vulnerable (DD by Japan's Ministry of the Environment Red List) Chinese softshell turtle .
Yakult Fukuoka Plant	Chikugo River basin	60,721	39,914	92	2	Within 10 km downstream of the plant, there is an IUCN Category IV area (wildlife sanctuary). Also, the Japanese grenadier anchovy , classified by IUCN as endangered (Ib by Japan's Ministry of the Environment Red List), and the Ariake stripe spined loach , vulnerable (Ib by the Ministry of the Environment Red List), may possibly inhabit small bodies of water around the plant.
Shonan Cosmetics Plant	Sagami River and Hikiji River basins	17,040	16,854	106	1	Within 10 km downstream of the plant, there is an IUCN Category IV protected area (wildlife sanctuary). Also, the genuine bitterling , classified by IUCN as vulnerable (Ib by Japan's Ministry of the Environment Red List) may possibly inhabit the small bodies of water around the plant.

* The northern pintail duck is not an aquatic species and thus not included in the total

Conserving biodiversity through afforestation

■ Environmental Actions (2021–2024) Tree Planting: Japan

In 2021, as one of the Environmental Actions (2021–2024) initiatives conducted for our CSR campaign, we planted 30 trees at 13 locations throughout Japan on May 22nd, the International Day for Biological Diversity, and on other occasions.

■ Million Trees Project: Yakult China Group

In 2015, the Yakult China Group began participating in the Million Trees Project run by the NGO Shanghai Roots & Shoots. The group has donated 2,000 seedlings every year since, most recently in 2021. With a total of 14,000 trees planted at the Yakult public welfare forest (14.76 hectares) and an average conservation rate of approximately 70% (NGO data), this initiative has been steadily contributing to the afforestation of the area.

■ Working with Treedom to plant 10,000 trees in 3 years: Yakult Europe B.V.

In 2022, Yakult Europe B.V. began a new activity in collaboration with Treedom, a global web platform that facilitates tree-planting around the world. Seedlings purchased online by Treedom users are planted and raised by farmers in Africa and Central and South America. To raise awareness of this activity among operating companies in Europe, the company presented every employee of the Yakult Group in Europe with a seedling and a Treedom code for an individual tree, and now works with employees to manage Yakult's forest online.

Biodiversity conservation in partnership with stakeholders

Both in Japan and overseas, we partner with relevant authorities, local governments, NGOs, NPOs and other stakeholders to promote business activities and social contributions that further biodiversity conservation.

■ Joining UN and Ministry of the Environment initiatives

The Yakult Group has implemented Yakult CSR campaigns for all workers since fiscal 1994. In fiscal 2017, we joined the My Action Declaration program of the Japan Committee for United Nations Decade on Biodiversity (UNDB-J) that encourages biodiversity engagement in daily life, and 15,706 Yakult workers participated by selecting and declaring their commitment to any number of five actions to protect biodiversity. This initiative was highly rated and featured in the UNDB-J's collection of My Action Declaration initiatives.

[WEB](#) [UNDB-J My Action Declaration Initiatives >>>](#)

https://undb.jp/wp/wp-content/uploads/2019/06/action_jirei.pdf (Japanese)

■ Partnering with international NGO OISCA

Founded in 1961, OISCA International is an NGO with the highest UN consultative status. OISCA focuses on rural development, environmental conservation and the cultivation of future talent in the Asia-Pacific region.

Yakult has worked with OISCA around the world to make social contributions since 1979.

• Supporting Children's Forest Program

We support the OISCA Children's Forest Program as an activity related to biodiversity conservation. This program encourages local communities to understand the value of forests and the natural environment, and participate in forest conservation themselves, through activities such as environmental education, community-led tree planting, and helping children green the areas around their schools.

We consult with OISCA to determine specific regions to support, and our contributions have been used for activities in places such as Indonesia and the Philippines.

Use of internationally certified paper in products (participating in biodiversity-related certification programs)

We use environmentally responsible FSC^{®*1}- and PEFC^{*2}-certified papers, both of which programs are known as forest certification programs, in some of our paper containers for soft drinks.

We believe that the use of paper with forest certification contributes to climate action, biodiversity conservation, and appropriate forest and wood management across the supply chain. To these ends, we are in the process of switching to using FSC[®]- and PEFC-certified papers for our main paper containers and packaging.

*1 The FSC[®] (Forest Stewardship Council[®]) is an international NPO established with the goal of promoting responsible forest management more widely

*2 The PEFC[®] (Programme for the Endorsement of Forest Certification) is an international NGO that promotes the mutual recognition of forest certification programs established and operated in different countries based on standards set by the PEFC, and promotes sustainable forest management



責任ある森林管理
のマーク
FSC[®] N003728



Note: PEFC logo mark used with the permission of the Sustainable Green Ecosystem Council (SGEC/PEFC Japan).